

SIZE:
DESIGN:
OPERATING:
CAPACITY:

QAY-A1/A2/A3 WELLHEAD
MASTER /WING 2 9/16" 15K
15,000 PSIG
10,000 PSIG

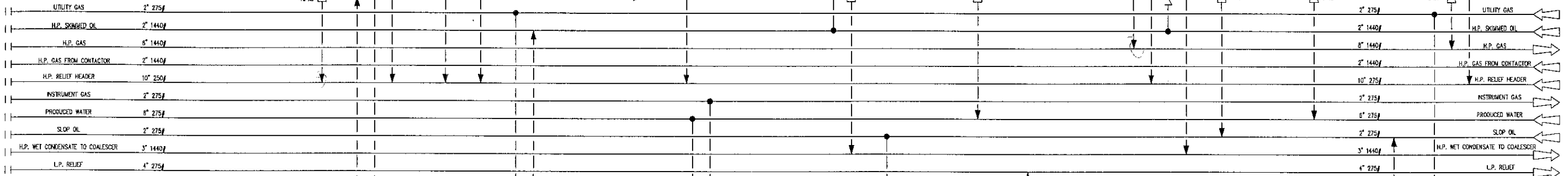
GAY-0100/0200/0300 WELL MANIFOLD
4" TEST / 8" PRODUCTION / 2 1/2" BLOWDOWN
10,000 PSIG / 1440 PSIG / 10,000 PSIG
1100 PSIG @ 165F
25 MMSCFD / 75 MMSCFD

HBG-1100 PRODUCTION COOLER
23" I.D. x 24'-0" LG. / 3/4" O.D. x 24'-0" LG.
1440 PSIG @ 250F / 245 PSIG @ 250F
1100 PSIG @ 165F
7.5 MMBTU/HR

HBG-1200 TEST COOLER
20" I.D. x 20'-0" LG. / 3/4" O.D. x 20'-0" LG.
1440 PSIG @ 250F / 245 PSIG @ 250F
1100 PSIG @ 165F
2.5 MMBTU/HR

MBD-1000 PRODUCTION SEPARATOR
46" O.D. x 15'-0" S/S
1440 PSIG @ 130° F
1100 PSIG @ 100° F
75 MMSCFD, 3000 BCPD, 1500 BWPD

MBD-2000 TEST SEPARATOR
42" O.D. x 10'-0" S/S
1440 PSIG @ 130° F
1100 PSIG @ 100° F
25 MMSCFD, 1000 BCPD, 500 BWPD



SIZE:
DESIGN:
OPERATING:
CAPACITY:

PBE-1150/1250 SEAWATER PUMPS
40 H.P. @ 480V/60HZ/3φ
510 GPM @ 50 PSIG EACH

PBE-3050/3060 SKIMMED OIL PUMPS
TEXSTEAM 6121
1800 PSIG MAX DISCHARGE PRESSURE
9.0 GPM @ 1050 PSIG EACH

MBM-3000 PRODUCED WATER SKIMMER
54" I.D. x 15'-0" S/S
160 PSIG @ 150° F
30 PSIG @ 100° F
5000 BWPD

ABH-6000 SUMP TANK
4'-0" x 8'-0" x 4'-0"
ATMOS. @ 100F
ATMOSPHERIC
3000 BWPD

PBE-6500 SUMP TANK PUMP
WLDEN M4
125 PSIG MAX. DISCHARGE PRESSURE
50 GPM @ 30 PSIG

GENERAL NOTES:

- 1.) FUSIBLE PLUGS (TSE) ARE INSTALLED IN ACCORDANCE WITH GUIDELINES IN API 14C TABLE C-1
- 2.) ALL PIPE WELDING IS IN ACCORDANCE WITH PROVISIONS OF THE CURRENT EDITION OF AWS B31.3 IN EFFECT AT THE TIME OF FABRICATION
- 3.) ALL BLOCK VALVES SHOWN UPSTREAM OF PSV'S ARE LOCKED OPEN
- 4.) SAC REFERENCES FOR UPSTREAM FLOWLINE SEGMENT (FA) OMITTED FOR CLARITY

William L. Doke
WILLIAM L. DOKE
Reg. No. 15898
Registered Professional Engineer in Mechanical

NO.	DATE	REVISIONS	BY	CHK	APP	NO.	DATE	REVISIONS	BY	CHK	APP
0	1/26/97	REVISED FOR CONSTRUCTION				5	8-28-97	RE-ISSUED PER MMS INSPECTION			
1	5/21/97	GENERAL REVISION									
2	5/20/97	ISSUED FOR PERMITTING									
3	5/25/97	AS BUILT									
4	7/2/97	GENERAL REVISION									
5	8-8-97	RE-ISSUED FOR PERMITTING									

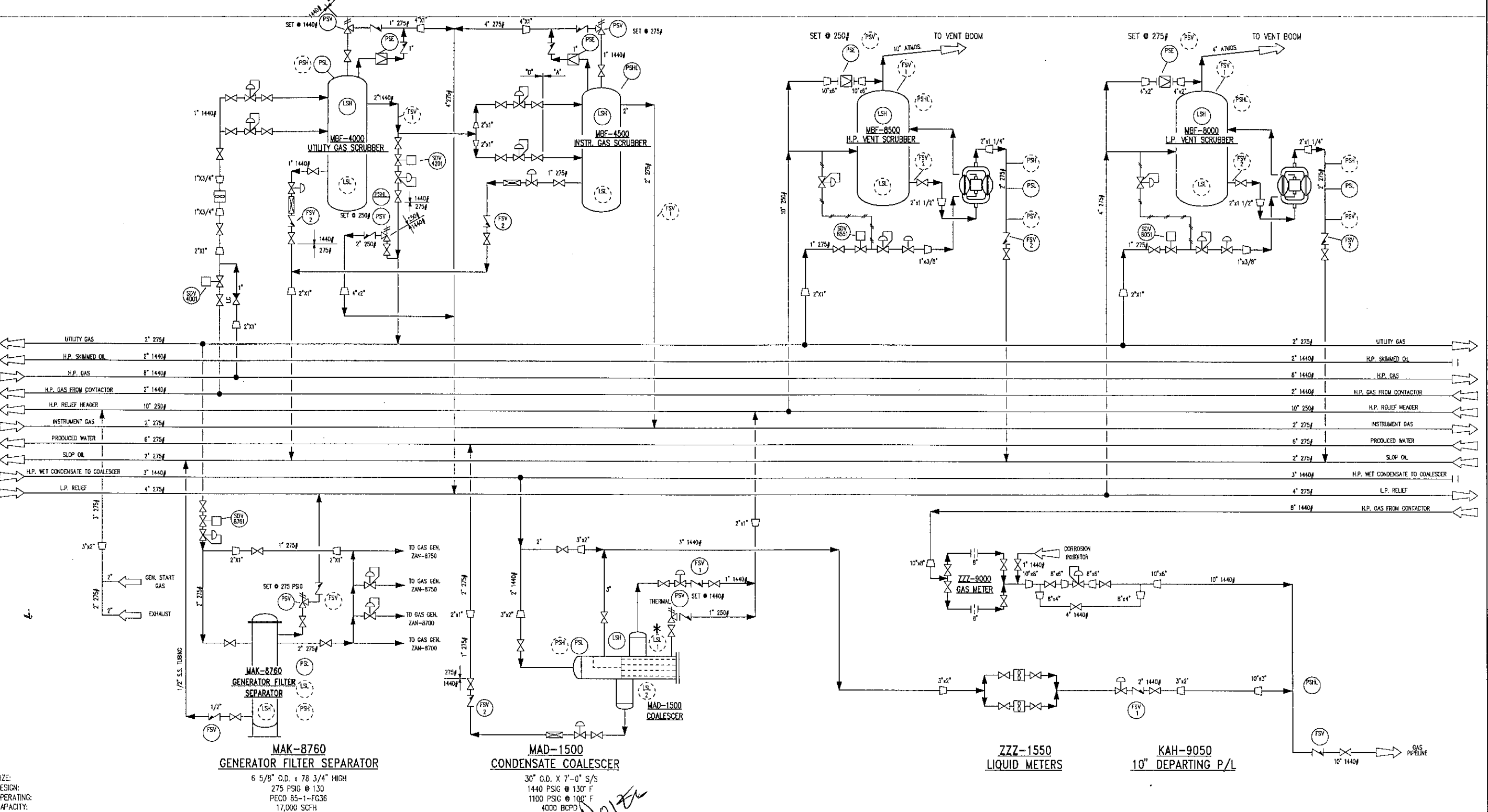
ENRON Oil & Gas Company

PROCESSED BY: **A. F. INDUSTRIES**

DESCRIPTION: PROCESS/SAFETY ANALYSIS FLOW DIAGRAM
OCS-G-14467
EUGENE ISLAND BLK. 135 "A"

DATE: 08-28-97

ZZZ-4200 UTILITY GAS HEADER 2" 275# 200 PSIG @ 100° F	MBF-4000 UTILITY GAS SCRUBBER 16" O.D. X 5'-0" S/S 1440 PSIG @ 130° F 500 PSIG @ 100° F 250 MSCFD	MBF-4500 INSTRUMENT GAS SCRUBBER 16" O.D. X 5'-0" S/S 1440 PSIG @ 130° F 150 PSIG @ 100° F 250 MSCFD	MBF-8500 H.P. VENT SCRUBBER 72" I.D. X 10'-0" S/S 250 PSIG @ 200° F 80 PSIG @ 165° F 90 MMSCFD, 4000 BLPD	PBE-8550 H.P. VENT SCRUBBER PUMP WILDEN M8 125 PSIG MAX. DISCHARGE PRESSURE 75 GPM @ 30 PSIG	MBF-8000 L.P. VENT SCRUBBER 20" O.D. X 5'-0" S/S 285 PSIG @ 100° F 40 PSIG @ 100° F 4 MMSCFD, 120 BCPD, 3000 BLPD	PBE-8050 L.P. VENT SCRUBBER PUMP WILDEN M4 125 PSIG MAX. DISCHARGE PRESSURE 50 GPM @ 30 PSIG
---	---	--	---	---	---	---



GENERAL NOTES:

- FUSIBLE PLUGS (TSE) ARE INSTALLED IN ACCORDANCE WITH GUIDELINES IN API 14C TABLE C-1
- ALL PIPE WELDING IS IN ACCORDANCE WITH PROVISIONS OF THE CURRENT EDITION OF ANSI B31.3 IN EFFECT AT THE TIME OF FABRICATION
- ALL BLOCK VALVES SHOWN UPSTREAM OF PSVS ARE LOCKED OPEN

William L. Doize

 WILLIAM L. DOIZE
 Registered Professional Engineer in
 MECHANICAL ENGINEERING

NO.	DATE	REVISIONS	BY/CHK/APP	NO.	DATE	REVISIONS	BY/CHK/APP
0	3/28/97	REVISED FOR CONSTRUCTION					
1	5/23/97	GENERAL REVISION					
2	6/30/97	ISSUED FOR PERMITTING					
3	8/25/97	AS BUILT					
4	8/8/97	RE-ISSUED FOR PERMITTING					
5	8-28-97	RE-ISSUED PER NMS INSPECTION					

CUSTOMER: **ENRON Oil & Gas Company**

PREPARED BY: **AFI INDUSTRIES**
 P.O. BOX 91731
 LAFALETTE LA 70509

DESCRIPTION: PROCESS/SAFETY ANALYSIS FLOW DIAGRAM
 OCS-G-14467
 EUGENE ISLAND BLK. 135 "A"

P.O. NO.	LOG NO.	3259	ENR	W. DOIZE	CHK. BY	D. GUIDRY	DRG. NO.	AFI
APPROVED BY	DATE		CHK. BY	FEL	DATE	08-28-97	3259-002	5

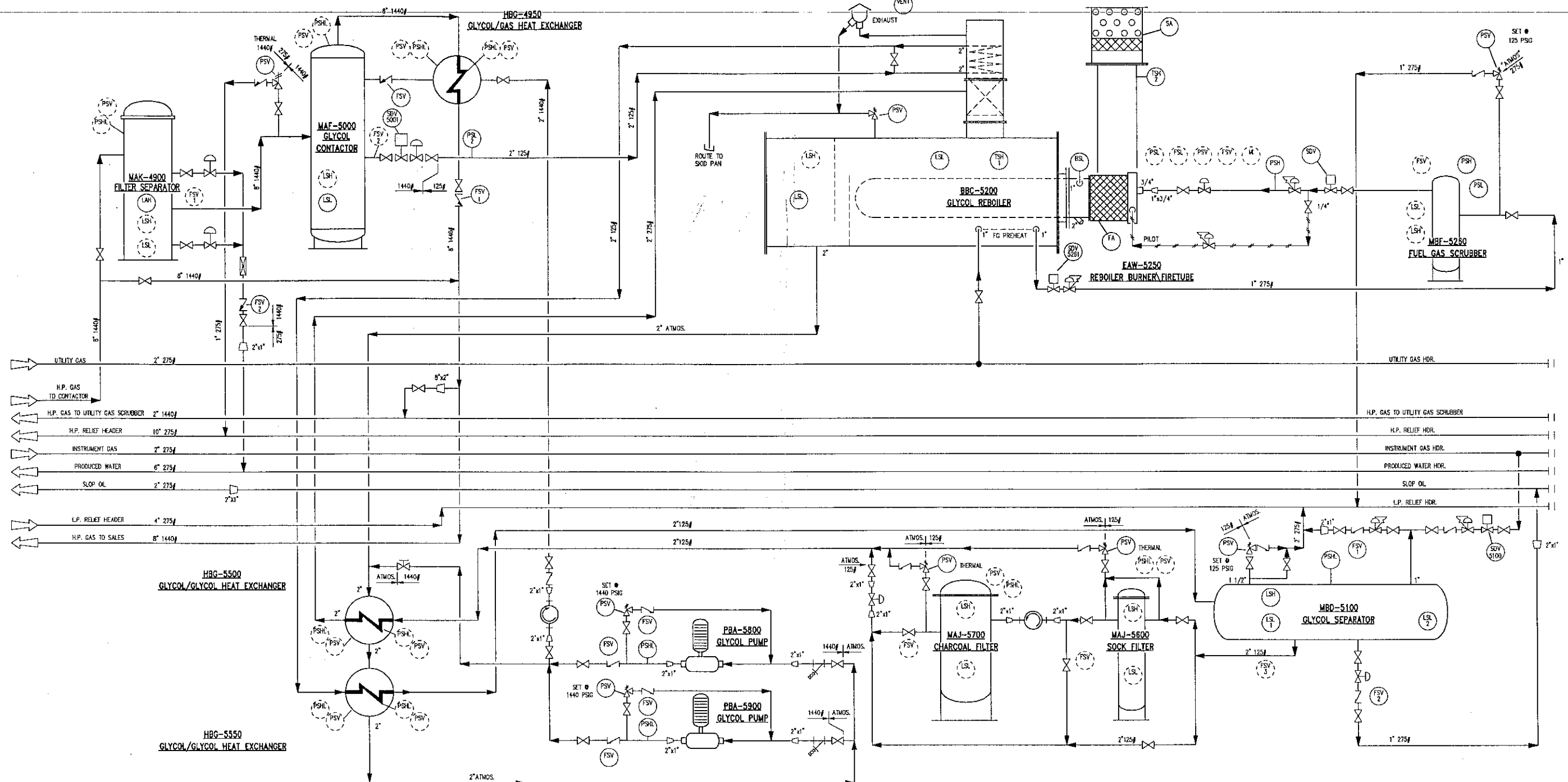
MAK-4900
FILTER SEPARATOR
 16" O.D. x 12'-6" S/S
 DESIGN: 1440 PSIG @ 130F
 OPERATING: 1100 PSIG @ 100F
 CAPACITY: 90 MMSCFD @ 100F

MAF-5000
GLYCOL CONTACTOR
 42" I.D. x 22'-6" S/S
 DESIGN: 1440 PSIG @ 130F
 OPERATING: 1100 PSIG @ 100F
 CAPACITY: 90 MMSCFD @ 100F

HBC-4950
GAS/GLYCOL HEAT EXCHANGER
 SHELL/TUBE 12 3/4" O.D. x 21'-6" S/S @ 5/8" O.D. x 23'-0" F/F
 DESIGN: 1440 PSIG @ 130F / 1440 PSIG @ 130F
 OPERATING: 1100 PSIG @ 100F

BBC-5200
GLYCOL REBOILER/SURGE
 48" O.D. x 15'-0" S/S
 DESIGN: ATMOS. @ 400F
 OPERATING: 1 MMBTU/HR

MBF-5260
FUEL GAS SCRUBBER
 10 3/4" O.D. x 4'-0" LG.
 DESIGN: 125 PSIG @ 130F
 OPERATING: 30 PSIG @ 100F



HBC-5500/5550
GLYCOL/GLYCOL HEAT EXCHANGERS
 BROWN FIN TUBE MODEL 40-1E000-820
 DESIGN: 150 PSIG @ 250F
 OPERATING: 35 PSIG @ 250F
 CAPACITY: 1.5 MMBTU/HR
 10 SECTION PARALLEL

PBA-5800/5900
GLYCOL PUMPS
 10 HP 1200 RPM ROTOR TECH GS-1108
 DESIGN: 12 GPM @ 2400 PSIG MDP

MAJ-5700
CHARCOAL FILTER
 16" O.D. x 5'-0" S/S
 DESIGN: 1440 PSIG @ 100F
 OPERATING: 35 PSIG @ 150F

MAJ-5600
GLYCOL SOCK FILTER
 PECO 59-11-336
 DESIGN: 275 PSIG @ 100F
 OPERATING: 35 PSIG @ 150F

MBD-5100
GLYCOL SKIMMER
 48" O.D. x 10'-0" S/S
 DESIGN: 125 PSIG @ 625F
 OPERATING: 35 PSIG @ 150F

- GENERAL NOTES:**
- 1.) FUSIBLE PLUGS (TSE) ARE INSTALLED IN ACCORDANCE WITH GUIDELINES IN API 14C TABLE C-1
 - 2.) ALL PIPE WELDING IS IN ACCORDANCE WITH PROVISIONS OF THE CURRENT EDITION OF ANSI B31.3 IN EFFECT AT THE TIME OF FABRICATION
 - 3.) ALL BLOCK VALVES SHOWN UPSTREAM OF PSVs ARE LOCKED OPEN

W. DOZIE
 REGISTERED PROFESSIONAL ENGINEER
 MECHANICAL ENGINEERING
 01/20/97

NO.	DATE	REVISIONS	BY/CHK/APP	NO.	DATE	REVISIONS	BY/CHK/APP
0	3/25/97	REVISED FOR CONSTRUCTION					
1	5/21/97	GENERAL REVISION					
2	5/20/97	ISSUED FOR PERMITTING					
3	6/25/97	AS BUILT					
4	8/8/97	RE-ISSUED FOR PERMITTING					
5	8-28-97	RE-ISSUED PER MMS INSPECTION					

ENRON Oil & Gas Company

PREPARED BY: **A. F. INDUSTRIES**
 P.O. BOX 91731
 LAFAYETTE LA 70509

DESCRIPTION: PROCESS/SAFETY ANALYSIS FLOW DIAGRAM
 OCS-G-14467
 EUGENE ISLAND BLK. 135 "A"

APPROVED BY: [Signature] DATE: 08-28-97